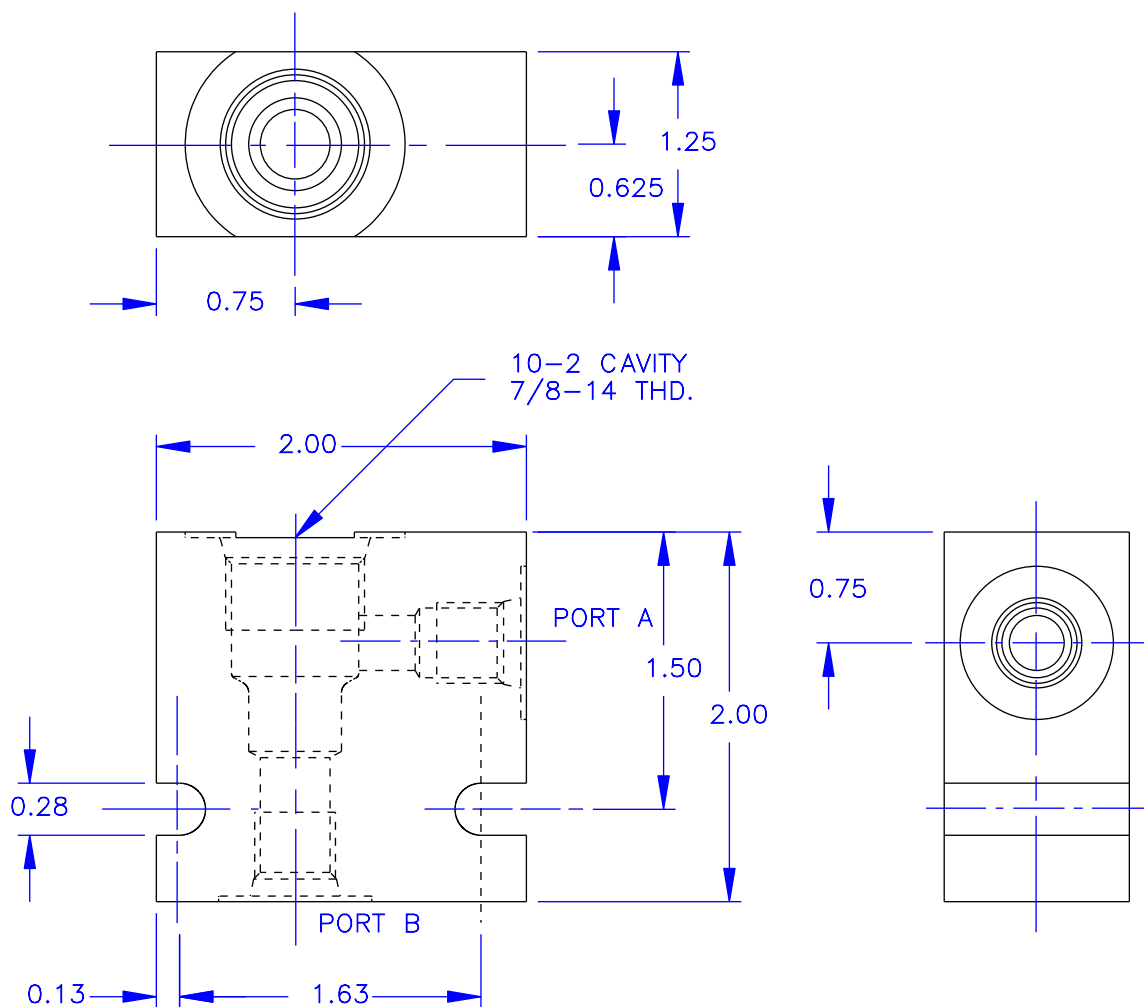




# STANDARD BODIES FOR 10-2 SERIES CARTRIDGES



RATED PRESSURE = 3500 PSI

TO ORDER A CARTRIDGE VALVE IN A BODY AS AN ASSEMBLY, ADD THE LAST TWO DIGITS OF THE BODY PART NUMBER TO THE END OF THE CARTRIDGE NUMBER.  
EXAMPLE: 1810-2P

STANDARD BODIES ARE ALUMINUM, CONSULT FACTORY FOR ALTERNATE MATERIALS.

- ORDERING INFORMATION -	
BODY NUMBER	10-2-XX
CAVITY TYPE	
A & B PORT SIZE	
-2P	= 1/4 NPTF
-3P	= 3/8 NPTF
-4T	= #4 SAE
-6T	= #6 SAE
-8T	= #8 SAE



**Vonberg Valve, inc.**

HYDRAULIC VALVE SPECIALISTS

3800 INDUSTRIAL AVE.  
ROLLING MEADOWS, IL 60008-1085  
PH: (847) 259-3800 FAX: (847) 259-3997