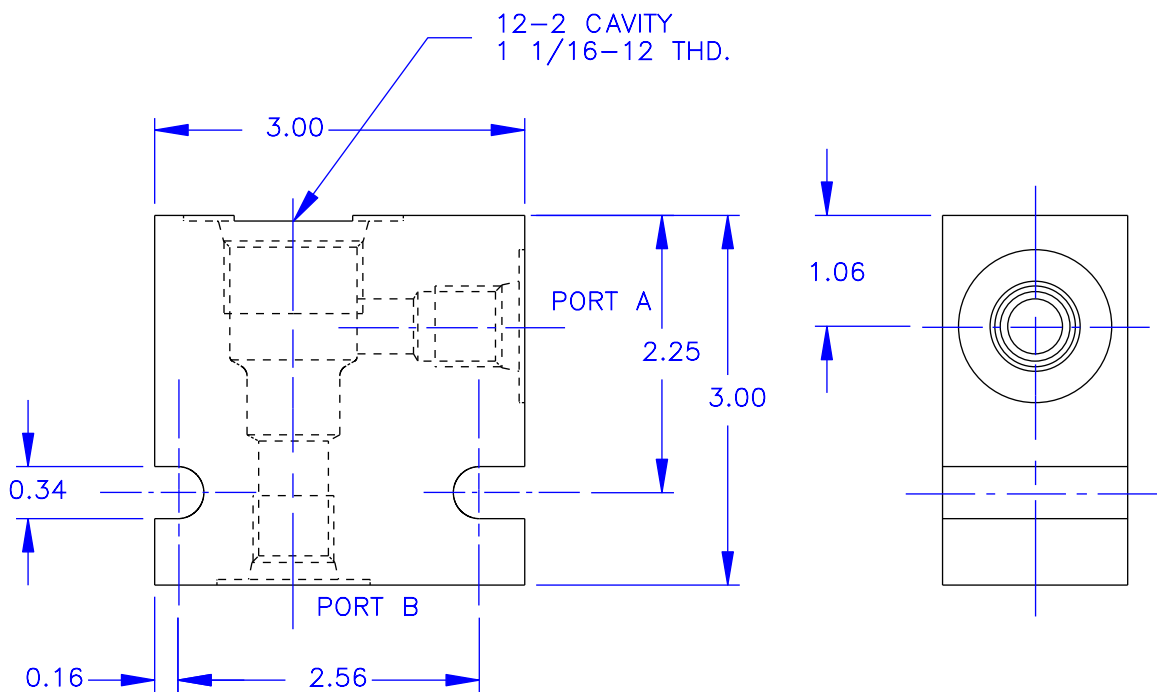
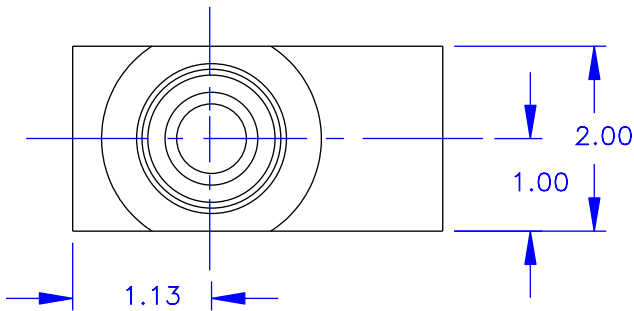




STANDARD BODIES FOR 12-2 SERIES CARTRIDGES



RATED PRESSURE = 3500 PSI

TO ORDER A CARTRIDGE VALVE IN A BODY AS AN ASSEMBLY, ADD THE LAST TWO DIGITS OF THE BODY PART NUMBER TO THE END OF THE CARTRIDGE NUMBER.

EXAMPLE: 1812-6P

STANDARD BODIES ARE ALUMINUM, CONSULT FACTORY FOR ALTERNATE MATERIALS.

— ORDERING INFORMATION —

BODY NUMBER 12-2-XX
 CAVITY TYPE _____
 A & B PORT SIZE _____
 -3P = 3/8 NPTF
 -4P = 1/2 NPTF
 -6P = 3/4 NPTF
 -8T = #8 SAE
 -10T = #10 SAE
 -12T = #12 SAE



Vonberg Valve, inc.

HYDRAULIC VALVE SPECIALISTS

3800 INDUSTRIAL AVE.
 ROLLING MEADOWS, IL 60008-1085
 PH: (847) 259-3800 FAX: (847) 259-3997