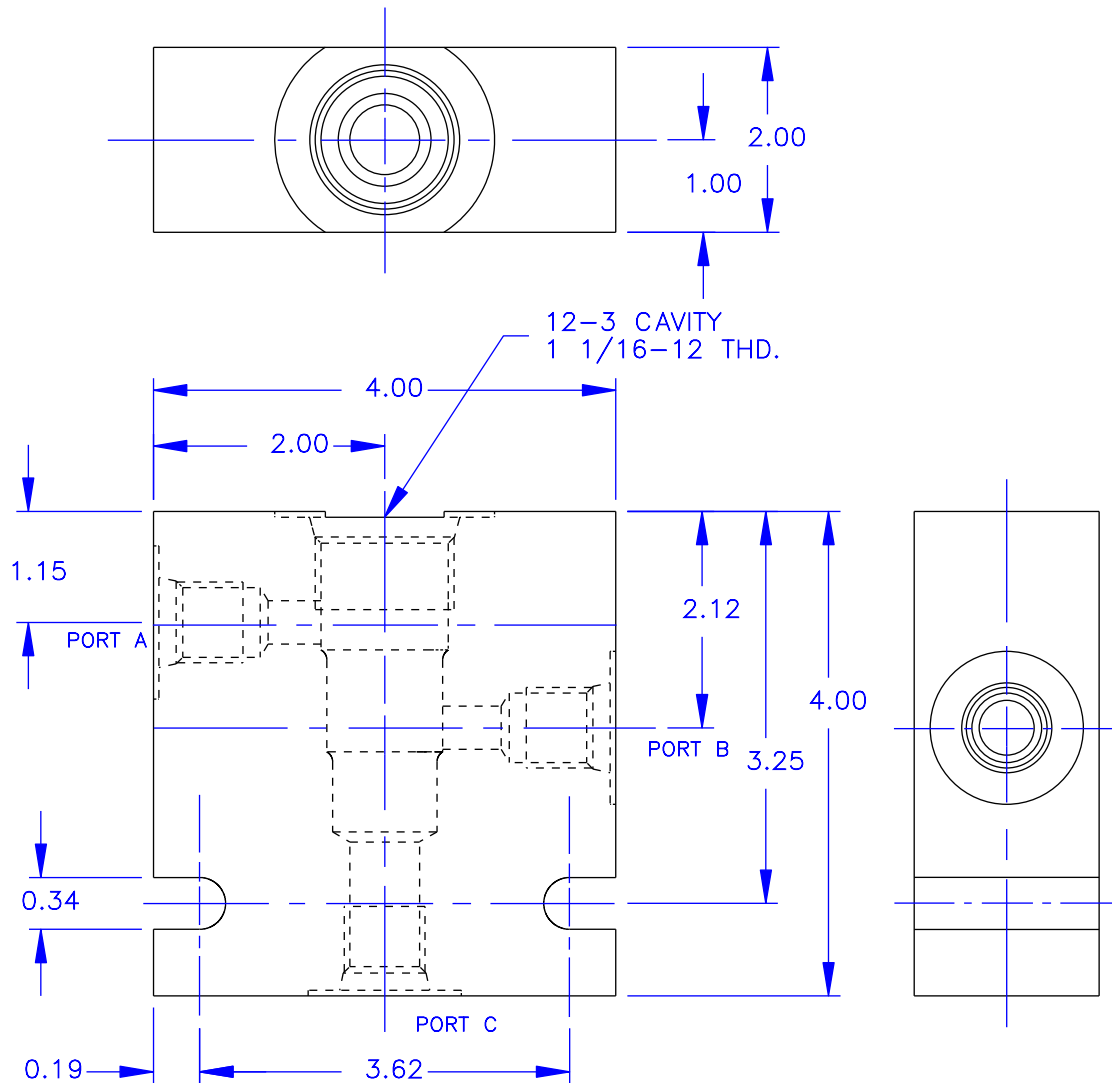




STANDARD BODIES FOR 12-3 SERIES CARTRIDGES



RATED PRESSURE = 3500 PSI

TO ORDER A CARTRIDGE VALVE IN A BODY AS AN ASSEMBLY, ADD THE LAST TWO DIGITS OF THE BODY PART NUMBER TO THE END OF THE CARTRIDGE NUMBER.
EXAMPLE: 2512-8P

STANDARD BODIES ARE ALUMINUM,
CONSULT FACTORY FOR ALTERNATE MATERIALS.

- ORDERING INFORMATION -

BODY NUMBER 12-3-XX

CAVITY TYPE _____

A, B & C PORT SIZE _____

- 3P = 3/8 NPTF
- 4P = 1/2 NPTF
- 6P = 3/4 NPTF
- 8T = #8 SAE
- 10T = #10 SAE
- 12T = #12 SAE



Vonberg Valve, inc.

HYDRAULIC VALVE SPECIALISTS

3800 INDUSTRIAL AVE.
ROLLING MEADOWS, IL 60008-1085
PH: (847) 259-3800 FAX: (847) 259-3997