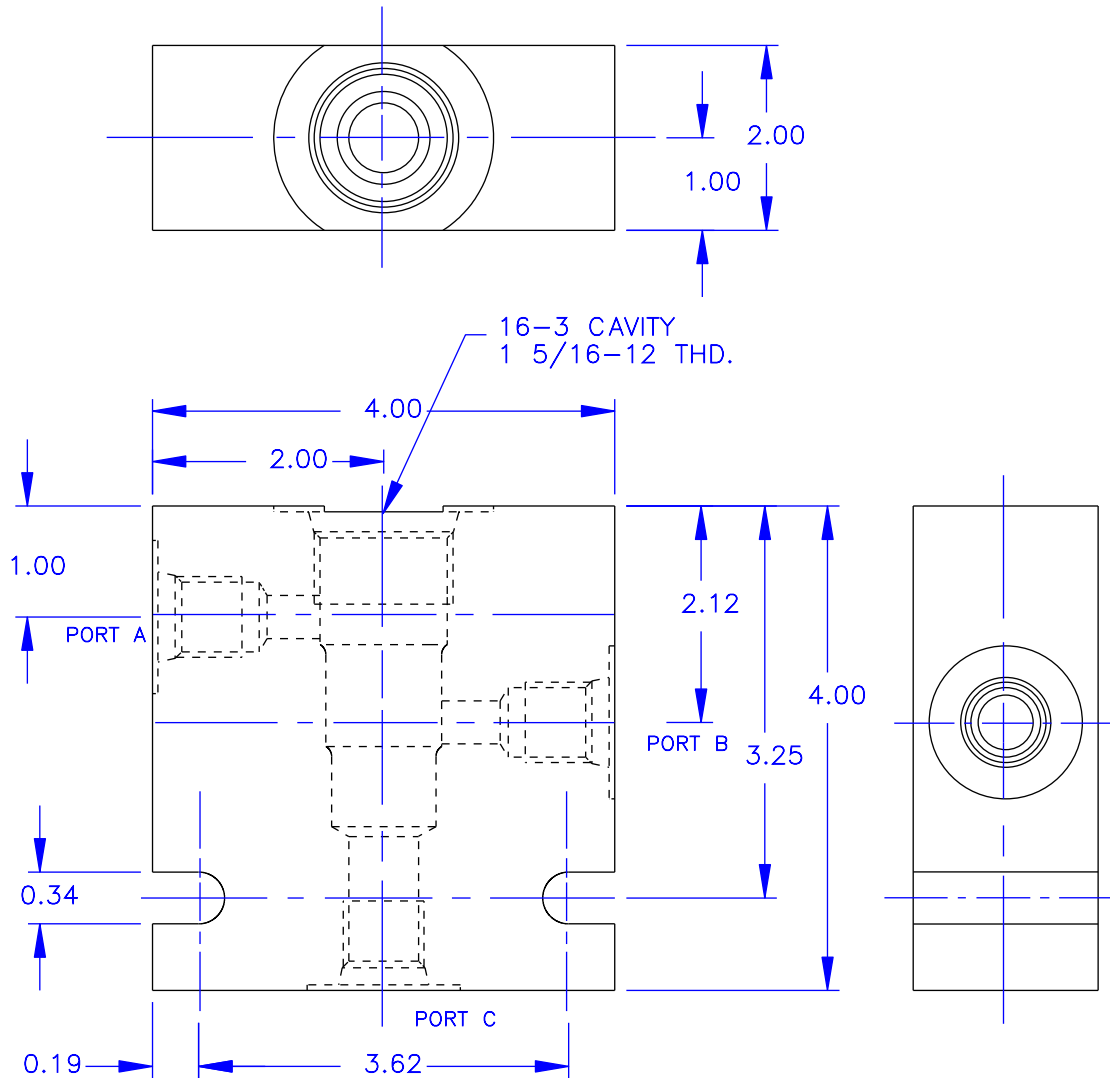




STANDARD BODIES FOR 16-3 SERIES CARTRIDGES



RATED PRESSURE = 3500 PSI

TO ORDER A CARTRIDGE VALVE IN A BODY AS AN ASSEMBLY, ADD THE LAST TWO DIGITS OF THE BODY PART NUMBER TO THE END OF THE CARTRIDGE NUMBER.
EXAMPLE: 2516-8P

STANDARD BODIES ARE ALUMINUM,
CONSULT FACTORY FOR ALTERNATE MATERIALS.

— ORDERING INFORMATION —

BODY NUMBER _____ 16-3-XX
CAVITY TYPE _____
A, B & C PORT SIZE _____
-6P = 3/4 NPTF
-8P = 1" NPTF
-10T = #10 SAE
-12T = #12 SAE
-16T = #16 SAE



Vonberg Valve, inc.

HYDRAULIC VALVE SPECIALISTS

3800 INDUSTRIAL AVE.
ROLLING MEADOWS, IL 60008-1085
PH: (847) 259-3800 FAX: (847) 259-3997