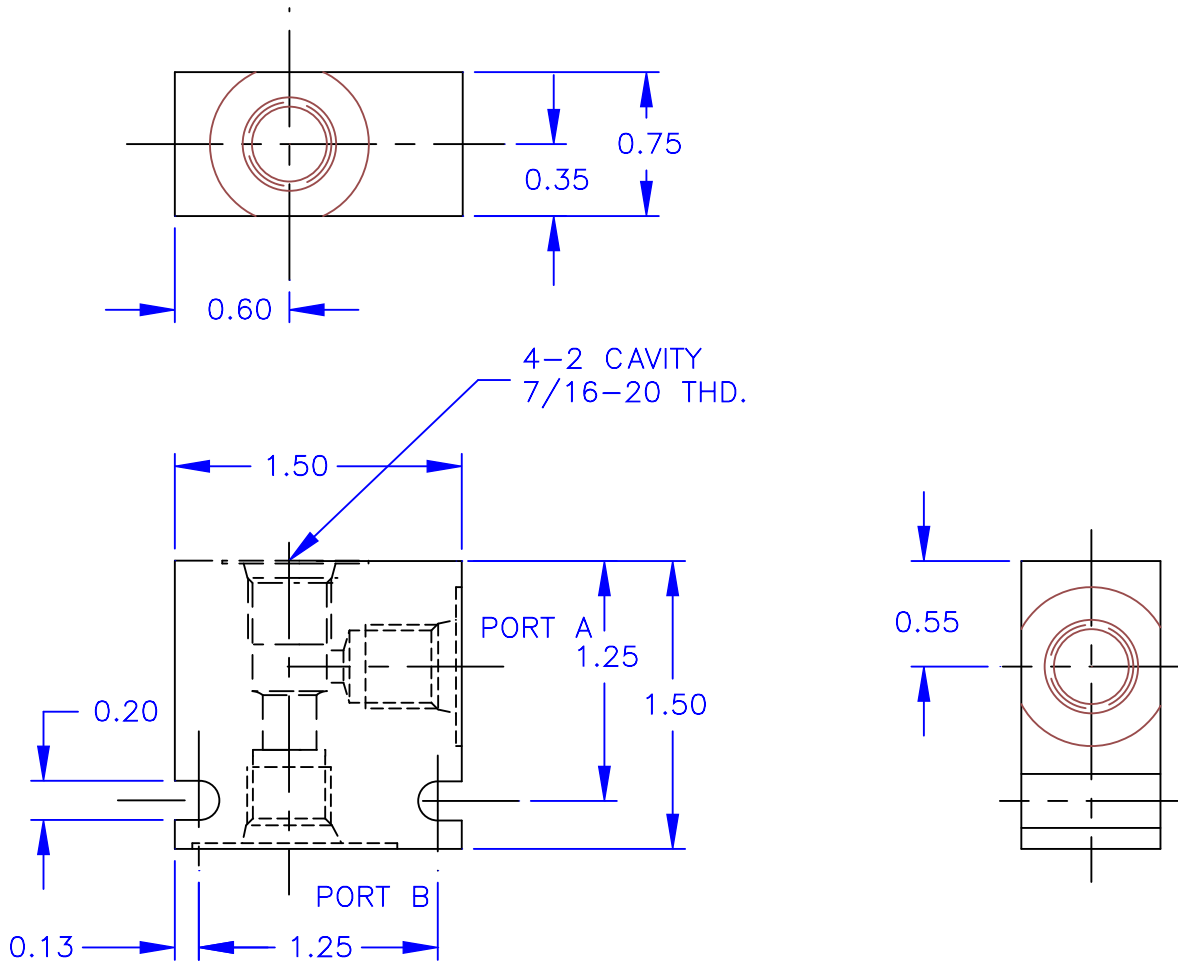




STANDARD BODIES FOR 4-2 SERIES CARTRIDGES



RATED PRESSURE = 3500 PSI

TO ORDER A CARTRIDGE VALVE IN A BODY AS AN ASSEMBLY, ADD THE LAST TWO DIGITS OF THE BODY PART NUMBER TO THE END OF THE CARTRIDGE NUMBER.
EXAMPLE: 2404-2P

STANDARD BODIES ARE ALUMINUM, CONSULT FACTORY FOR ALTERNATE MATERIALS.

- ORDERING INFORMATION -	
BODY NUMBER	4-2-XX
CAVITY TYPE	
A & B PORT SIZE	
-2P =	1/4 NPTF
-3P =	3/8 NPTF
-4T =	#4 SAE
-6T =	#6 SAE



Vonberg Valve, inc.
HYDRAULIC VALVE SPECIALISTS

3800 INDUSTRIAL AVE.
ROLLING MEADOWS, IL 60008-1085
PH: (847) 259-3800 FAX: (847) 259-3997