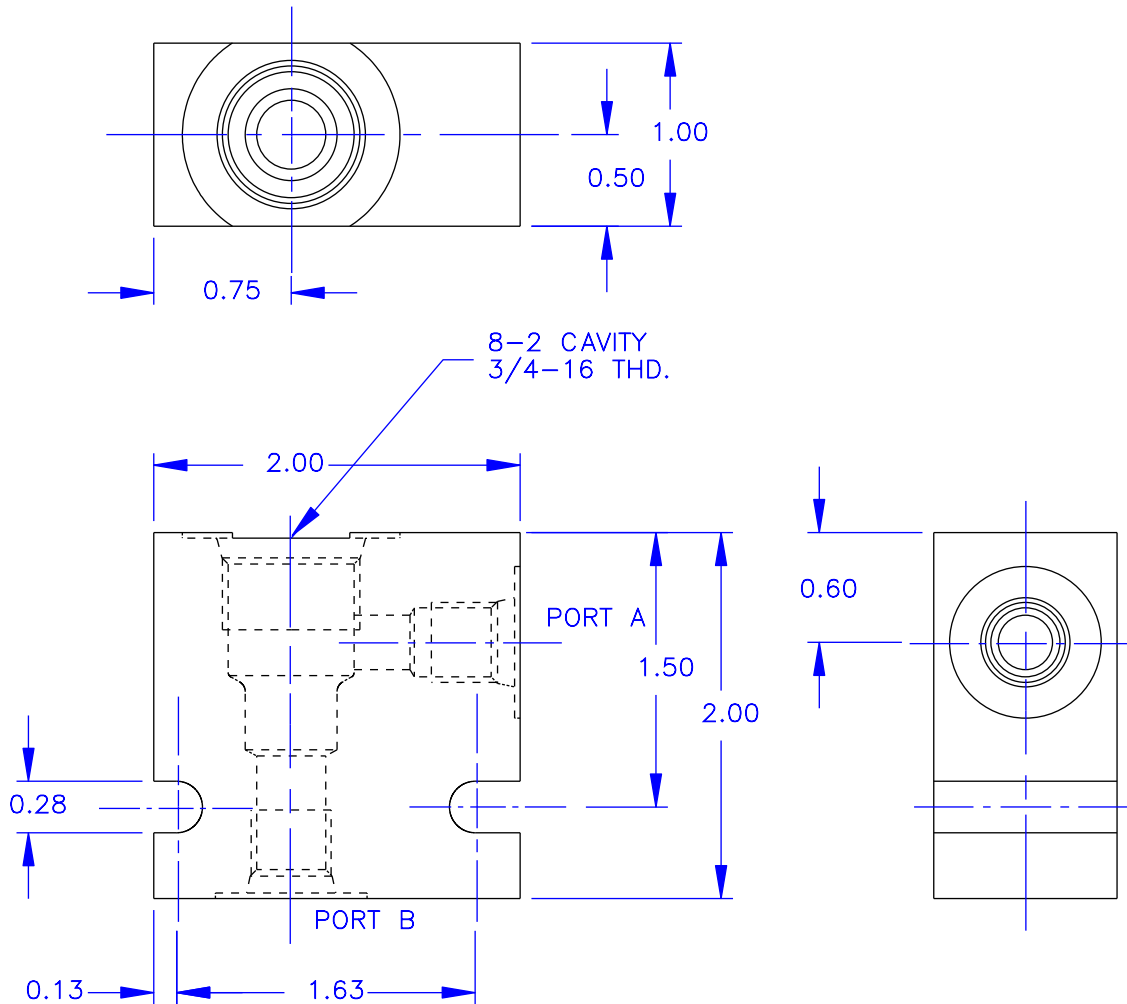




STANDARD BODIES FOR 8-2 SERIES CARTRIDGES



RATED PRESSURE = 3500 PSI

TO ORDER A CARTRIDGE VALVE IN A BODY AS AN ASSEMBLY, ADD THE LAST TWO DIGITS OF THE BODY PART NUMBER TO THE END OF THE CARTRIDGE NUMBER.
EXAMPLE: 1808-2P

STANDARD BODIES ARE ALUMINUM,
CONSULT FACTORY FOR ALTERNATE MATERIALS.

- ORDERING INFORMATION -

BODY NUMBER 8-2-XX

CAVITY TYPE

A & B PORT SIZE

-2P = 1/4 NPTF

-3P = 3/8 NPTF

-4T = #4 SAE

-6T = #6 SAE

-8T = #8 SAE



Vonberg Valve, inc.

HYDRAULIC VALVE SPECIALISTS

3800 INDUSTRIAL AVE.
ROLLING MEADOWS, IL 60008-1085
PH: (847) 259-3800 FAX: (847) 259-3997