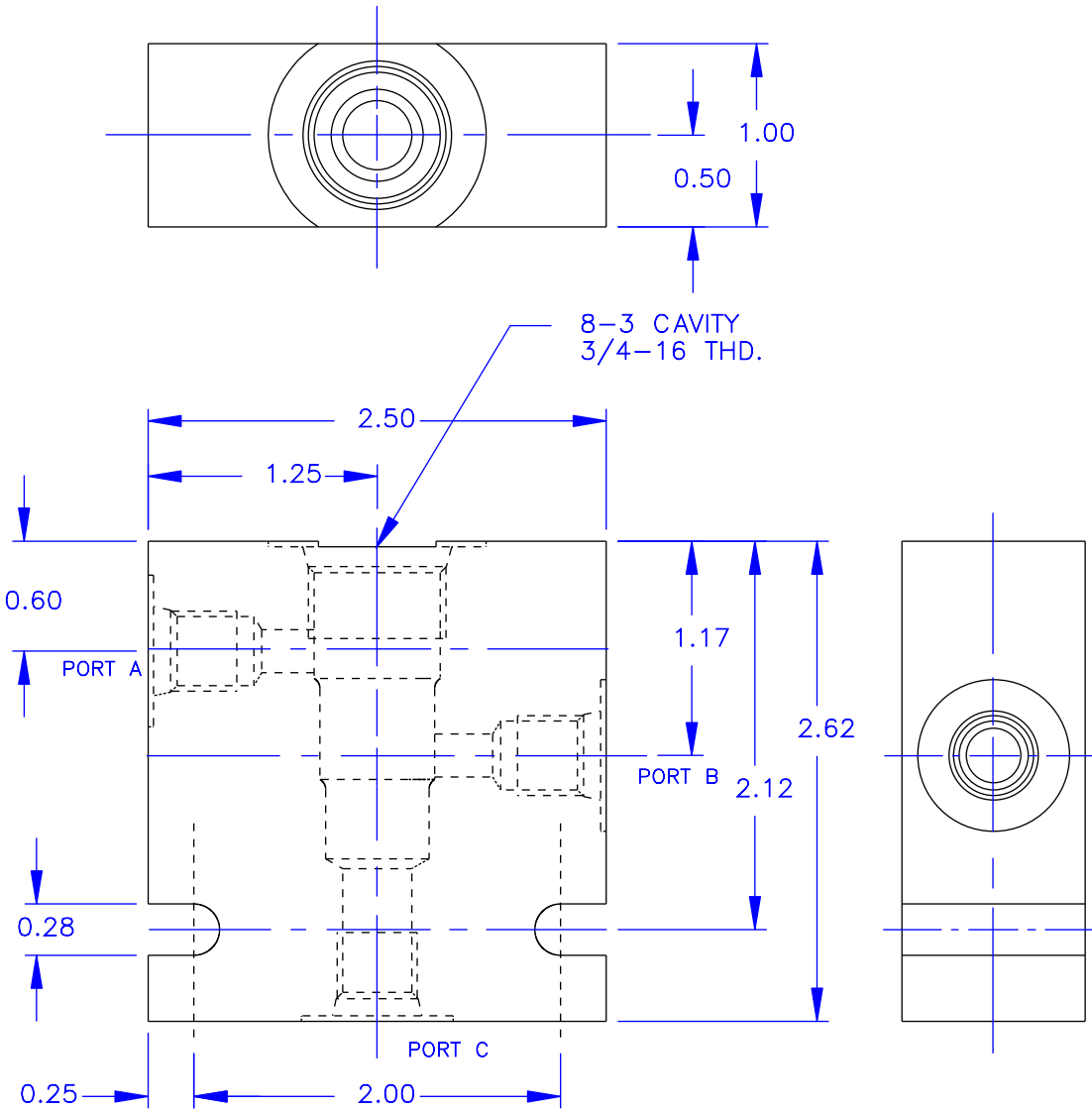




STANDARD BODIES FOR 8-3 SERIES CARTRIDGES



RATED PRESSURE = 3500 PSI

TO ORDER A CARTRIDGE VALVE IN A BODY AS AN ASSEMBLY, ADD THE LAST TWO DIGITS OF THE BODY PART NUMBER TO THE END OF THE CARTRIDGE NUMBER.

EXAMPLE: 2508-2P

STANDARD BODIES ARE ALUMINUM, CONSULT FACTORY FOR ALTERNATE MATERIALS.

— ORDERING INFORMATION —

BODY NUMBER 8-3-XX

CAVITY TYPE _____

A, B & C PORT SIZE _____

-2P = 1/4 NPTF
-3P = 3/8 NPTF
-4T = #4 SAE
-6T = #6 SAE
-8T = #8 SAE



Vonberg Valve, inc.

HYDRAULIC VALVE SPECIALISTS

3800 INDUSTRIAL AVE.
ROLLING MEADOWS, IL 60008-1085
PH: (847) 259-3800 FAX: (847) 259-3997