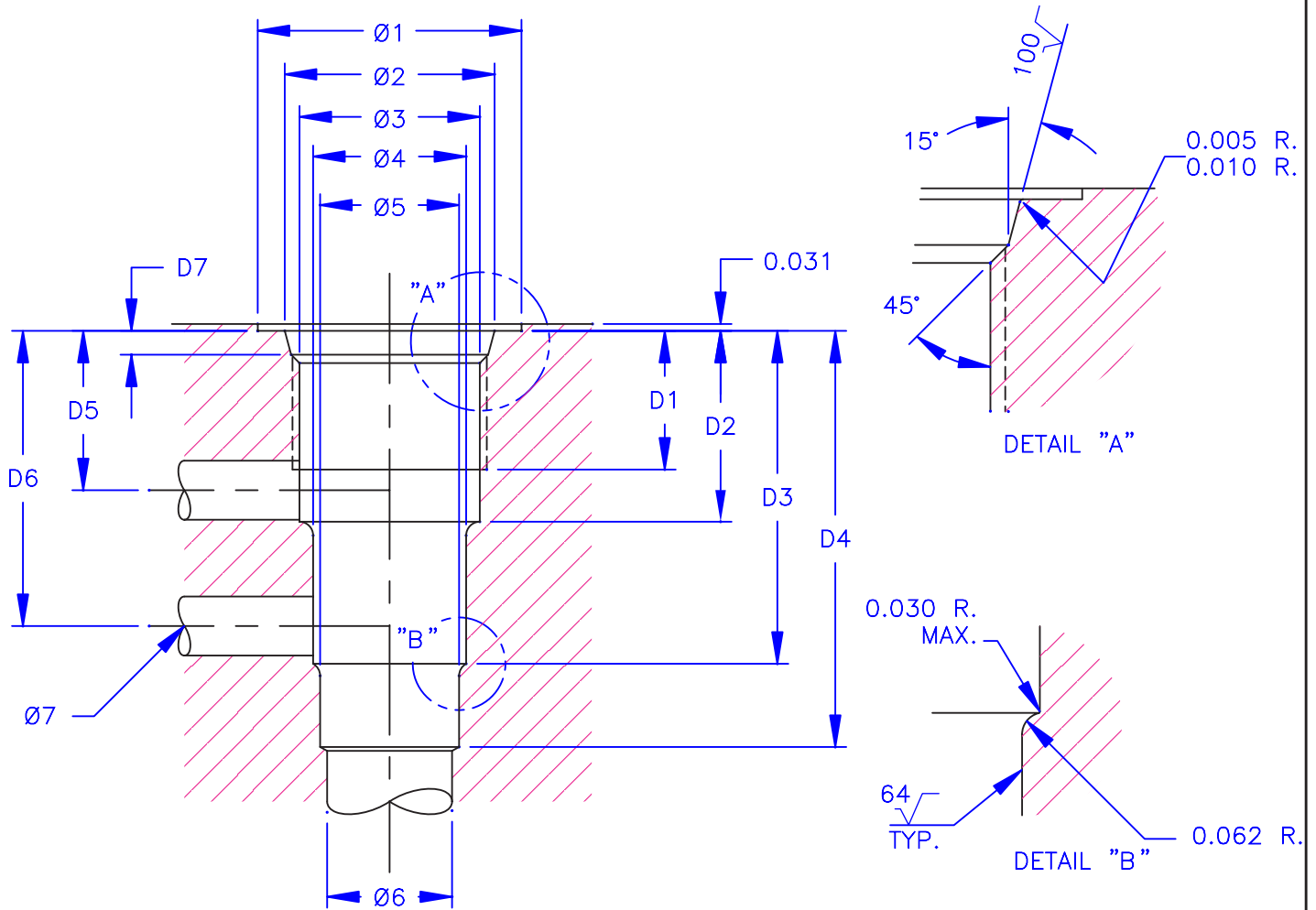




# -3 CAVITY DETAILS



	8-3	10-3	12-3	16-3
D1	0.562	0.656	0.750	0.750
D2	0.718	0.860	1.400	1.344
D3	1.270	1.500	2.370	2.469
D4	1.703	1.875	2.890	2.968
D5	0.578	0.719	1.120	0.969
D6	1.141	1.330	2.090	2.094
D7 <sup>+0.015</sup> / <sub>-0.000</sub>	0.100	0.100	0.130	0.130
Ø1	1.188	1.344	1.625	1.910
Ø2 <sup>+0.005</sup> / <sub>-0.000</sub>	0.811	0.942	1.148	1.398
Ø3	0.690/0.686	0.814/0.810	0.978/0.974	1.236/1.232
Ø4	0.627/0.625	0.690/0.688	0.939/0.937	1.128/1.126
Ø5	0.564/0.562	0.627/0.625	0.877/0.875	1.065/1.063
Ø6	0.500	0.562	0.812	0.750
Ø7	0.234	0.266	0.500	0.625
THD	3/4-16 UNF-2B	7/8-14 UNF-2B	1 1/16-12 UN-2B	1 5/16-12 UN-2B



**Vonberg Valve, inc.**

HYDRAULIC VALVE SPECIALISTS

VONBERG VALVE, INC.  
 3800 INDUSTRIAL AVE.  
 ROLLING MEADOWS, IL 60008-1085  
 PH: (847) 259-3800 FAX: (847) 259-3997