

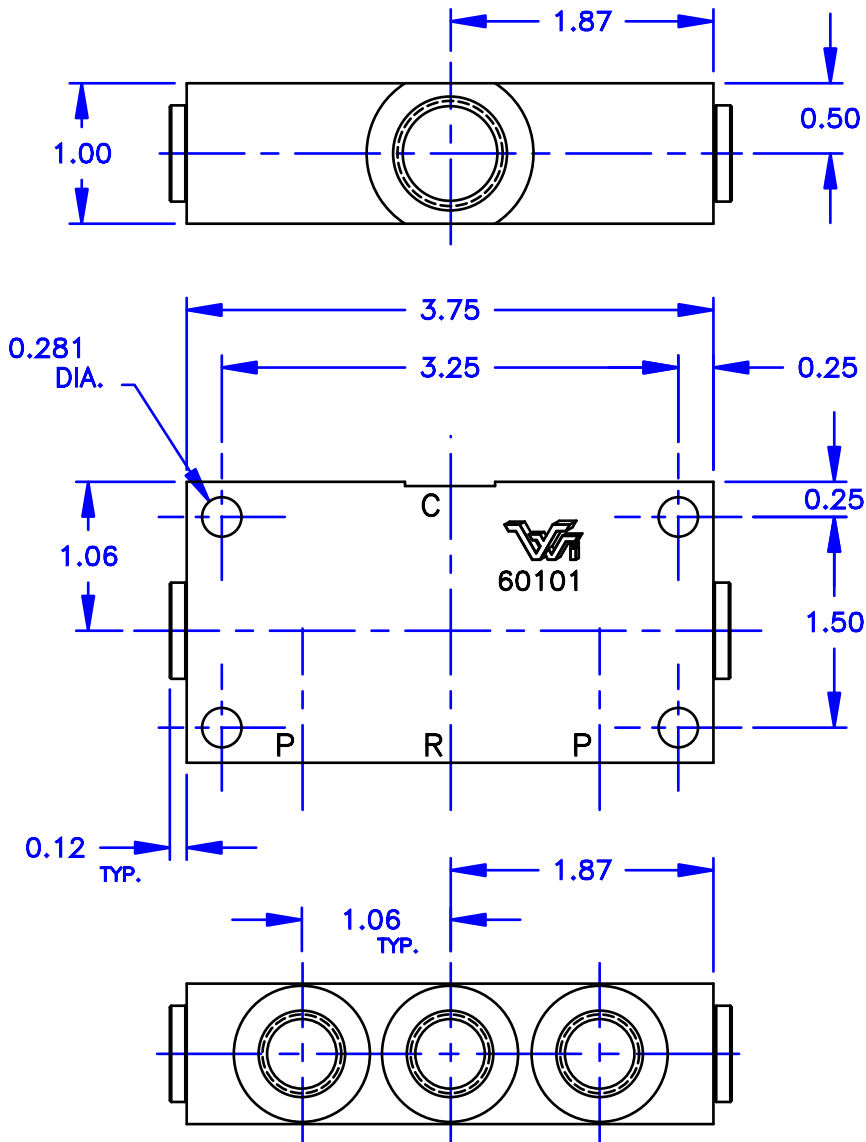


# SHUTTLE VALVE

60101

## 3 POSITION BRAKE CONTROL

**SPOOL TYPE  
FEMALE SAE**



### DESCRIPTION

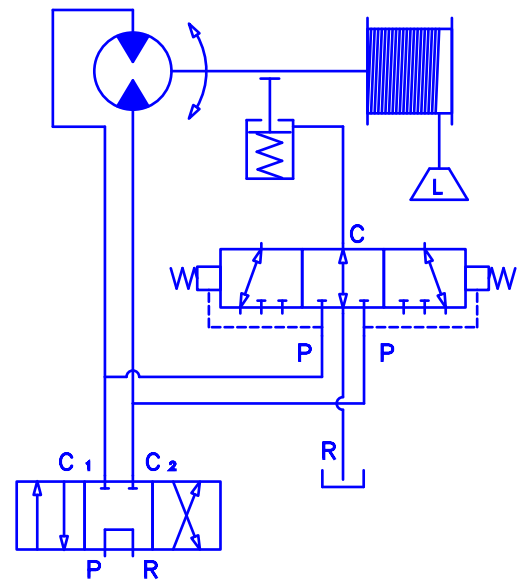
- A SHUTTLE VALVE, FOR USE IN SPRING APPLIED BRAKE CIRCUITS..

### OPERATION

- IN THE NORMALLY CENTERED POSITION FLOW FROM "C" TO "R" IS ALLOWED.
- SHIFT PRESSURE REQUIRED, EACH DIRECTION:
  - TO CRACK, "P" TO "C", 12 PSI MIN.
  - TO HOLD, "P" TO "C", 22.5 PSI MIN.
- IN THE SHUTTLED POSITION FLOW FROM "P" TO "C" IS ALLOWED.

### FEATURES

- SPRING BIAS NORMALLY CENTERED.
- ALUMINUM BODY AND SPOOL.
- NO INTERNAL PACKINGS.
- HIGHER SHIFT PRESSURES AVAILABLE - CONSULT FACTORY.
- HYDRAULIC OILS - GENERAL.
- A SHUTTLE VALVE, FOR USE IN SPRING APPLIED BRAKE CIRCUITS.



TYPICAL CIRCUIT

### - SPECIFICATIONS -

HYDRAULIC SYMBOL	
OPERATING PRESSURE	3500 PSI
TEMPERATURE RANGE	250°F TO -40°F
ALL DIMENSIONS IN INCHES	

PORT ID.	PORT SIZE
C	#8 SAE 3/4-16 UNF THD
P	#6 SAE 9/16-18 UNF THD
R	#6 SAE 9/16-18 UNF THD