



SHUTTLE VALVE

60112

3 POSITION BRAKE CONTROL

SPOOL TYPE
FEMALE SAE

DESCRIPTION

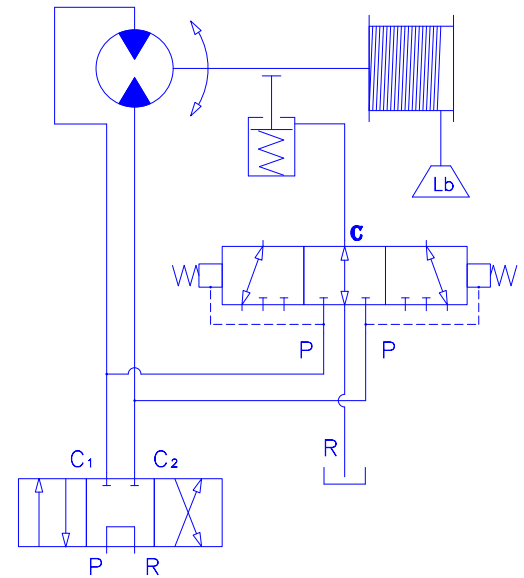
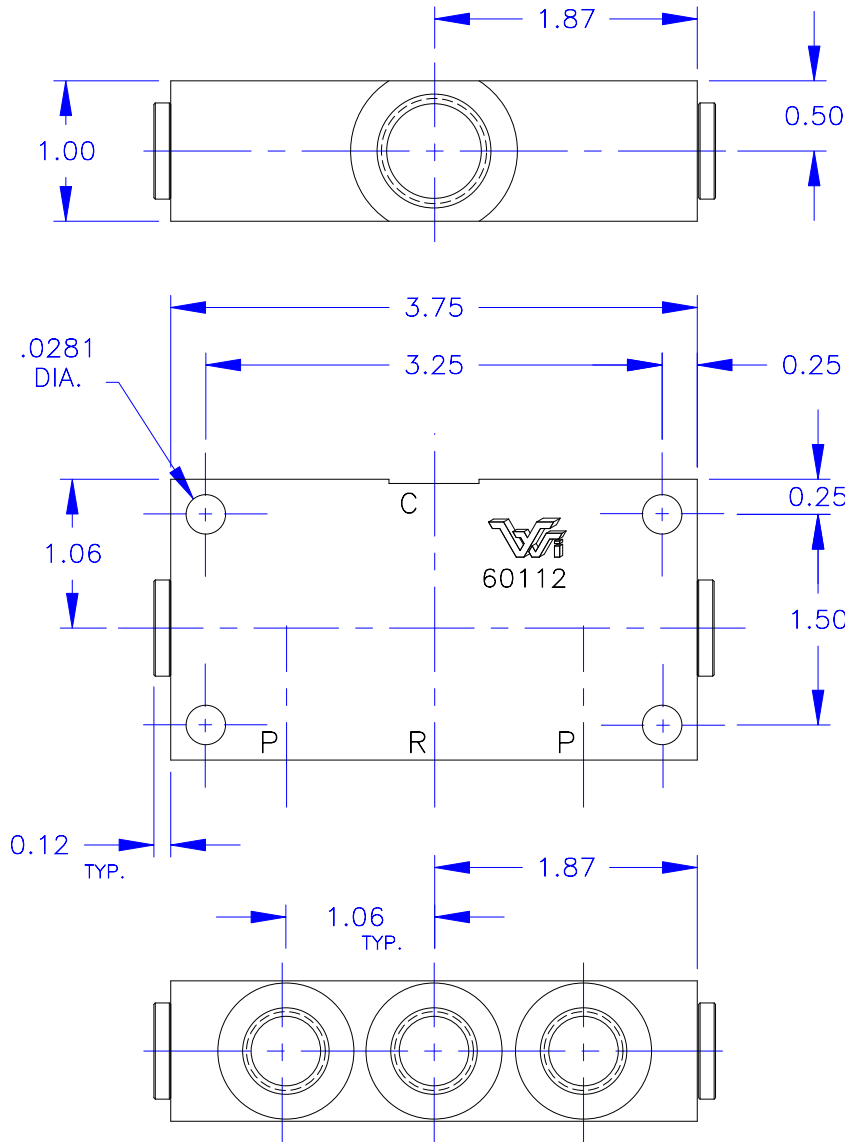
- A SHUTTLE VALVE, FOR USE IN SPRING APPLIED BRAKE CIRCUITS.

OPERATION

- IN THE NORMALLY CENTERED POSITION FLOW FROM "C" TO "R" IS ALLOWED.
- SHIFT PRESSURE REQUIRED, EACH DIRECTION:
 - TO CRACK, "P" TO "C", 50 PSI MIN.
 - TO HOLD, "P" TO "C", 80 PSI MIN.
- IN THE SHUTTLED POSITION FLOW FROM "P" TO "C" IS ALLOWED.

FEATURES

- SPRING BIAS NORMALLY CENTERED.
- ALUMINUM BODY AND SPOOL.
- NO INTERNAL PACKINGS.
- HIGHER SHIFT PRESSURES AVAILABLE - CONSULT FACTORY.
- HYDRAULIC OILS - GENERAL.



TYPICAL CIRCUIT

| - SPECIFICATIONS - | |
|--------------------------|----------------|
| HYDRAULIC SYMBOL | |
| OPERATING PRESSURE | 3500 PSI |
| TEMPERATURE RANGE | 250°F TO -40°F |
| ALL DIMENSIONS IN INCHES | |

| PORT ID. | PORT SIZE |
|----------|------------------------|
| C | #8 SAE 3/4-16 UNF THD |
| P | #6 SAE 9/16-18 UNF THD |
| R | #6 SAE 9/16-18 UNF THD |



Vonberg Valve, inc.

HYDRAULIC VALVE SPECIALISTS

3800 INDUSTRIAL AVE.
ROLLING MEADOWS, IL 60008-1085
PH: (847) 259-3800 FAX: (847) 259-3997