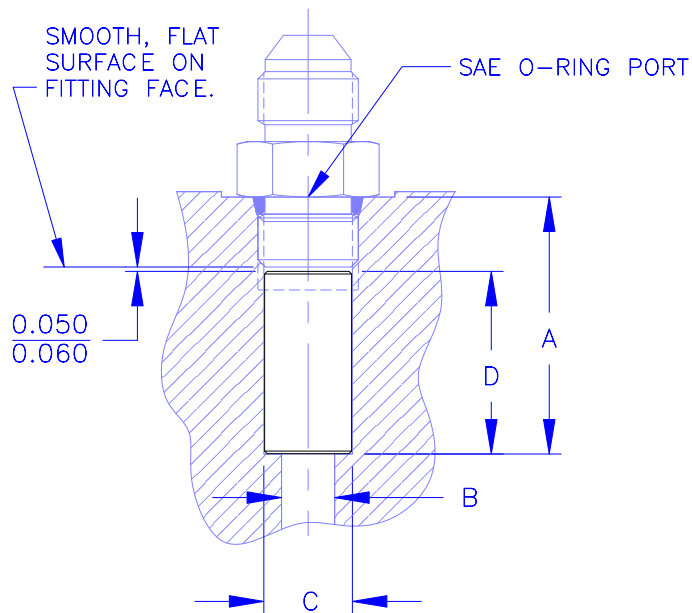
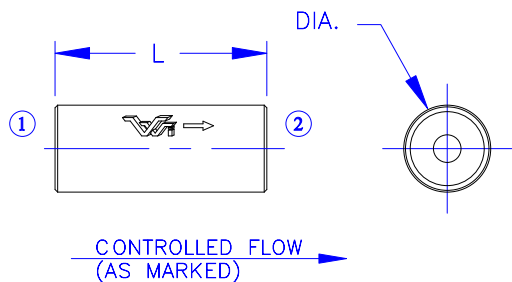




FLOW REGULATOR

1500 SERIES

SLIP-IN CARTRIDGE



DESCRIPTION

- AN IN-LINE, SLIP-IN CARTRIDGE PRESSURE-COMPENSATED, NONADJUSTABLE FLOW REGULATOR INTENDED FOR FIXED DISPLACEMENT HYDRAULIC CIRCUIT APPLICATIONS.

OPERATION

- IN THE CONTROLLED DIRECTION THIS REGULATOR WILL MAINTAIN A CONSTANT FLOW RATE THROUGHOUT A SPECIFIED PRESSURE RANGE
- REVERSE FLOW PASSES THROUGH THE CONTROLLING ORIFICE AND IS UNCONTROLLED PRODUCING A PRESSURE DIFFERENTIAL OF 120 PSI MAX. AT 150% OF CONTROLLED FLOW.

FEATURES

- **S.I.D.** SURGES INTERNALLY DAMPENED FEATURE IS OPTIONAL FOR LOAD LOWERING APPLICATIONS.
- ALUMINUM BODY, STEEL INTERNALS.
- HYDRAULIC FLUIDS - GENERAL.
- NO INTERNAL PACKINGS.

CAVITY

- BORE DEPTHS ASSUME THE USE OF A STD. O-RING BOSS CONNECTOR WITH THREAD LENGTHS BASED ON SAE J514.
- CARTRIDGE VALVE IS LEFT WITH APPROX. 0.060" OF SLACK IN THE CAVITY TO PREVENT DAMAGING VALVE.
- CARTRIDGE BODY SEATS ON SMOOTH, FLAT SURFACE OF FITTING IN THE REGULATED FLOW DIRECTION.

- SPECIFICATIONS -

HYDRAULIC SYMBOL	
PRESSURE RANGE	50 PSI TO 3500 PSI
TEMPERATURE RANGE	250°F TO -40°F
FLOW TOLERANCE	±10%
ALL DIMENSIONS IN INCHES	

- ORDERING INFORMATION -

ASSEMBLY NUMBER	15XX-X-XX
SERIES NUMBER	_____
UNDAMPENED - BLANK	_____
DAMPENED (S.I.D.) - 1	_____
REGULATED FLOW RATE (GPM)	_____

MODEL	L	VALVE DIA.	FLOW RANGE	A	B (MAX.)	C	D
1508	1.90	0.670	0.25 - 8.0 GPM	2.40/2.41	0.500	0.672/0.677	1.96/1.97
1510	2.03	0.795	0.50 - 15.0 GPM	2.59/2.60	0.625	0.797/0.802	2.09/2.10
1512	2.78	0.970	1.0 - 30.0 GPM	3.43/3.44	0.812	0.972/0.977	2.84/2.85
1514	3.00	1.095	1.0 - 30.0 GPM	3.65/3.66	0.812	1.097/1.102	3.06/3.07
1516	3.19	1.220	2.0 - 50.0 GPM	3.84/3.85	0.937	1.222/1.227	3.24/3.25
1524	3.25	1.783	5.0 - 75.0 GPM	3.90/3.91	1.437	1.787/1.792	3.31/3.32



Vonberg Valve, inc.

HYDRAULIC VALVE SPECIALISTS

3800 INDUSTRIAL AVE.
 ROLLING MEADOWS, IL 60008-1085
 PH: (847) 259-3800 FAX: (847) 259-3997