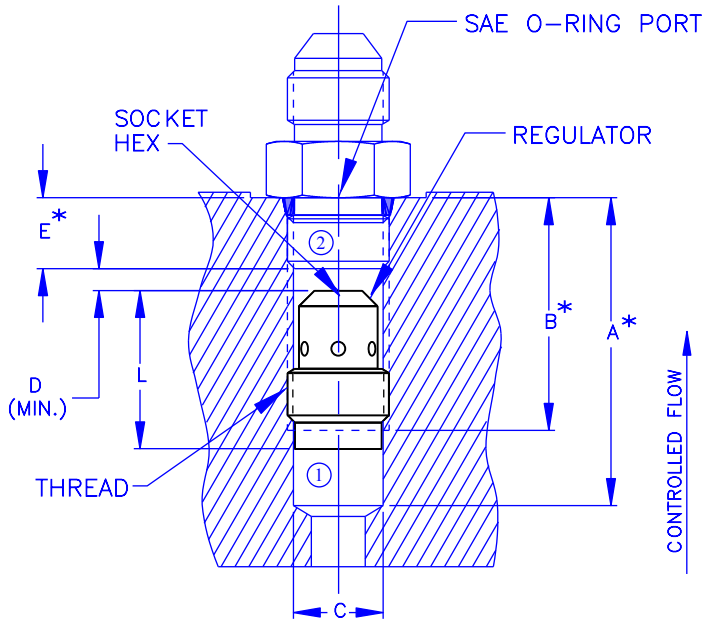




# FLOW REGULATOR

## IN-LINE INSERTABLE

6500 SERIES



### DESCRIPTION

- A THREADED INSERTABLE IN-LINE, PRESSURE-COMPENSATED, NONADJUSTABLE FLOW REGULATOR. INTENDED FOR FIXED DISPLACEMENT HYDRAULIC CIRCUIT APPLICATIONS.

### OPERATION

- IN THE CONTROLLED DIRECTION THIS REGULATOR WILL MAINTAIN A CONSTANT FLOW RATE THROUGHOUT A SPECIFIED PRESSURE RANGE.
- REVERSE FLOW PASSES THROUGH THE CONTROLLING ORIFICE AND IS UNCONTROLLED PRODUCING A PRESSURE DIFFERENTIAL OF 120 PSI MAX. AT 150% OF CONTROLLED FLOW.

### FEATURES

- **S.I.D.** SURGES INTERNALLY DAMPENED FEATURE IS OPTIONAL FOR LOAD LOWERING APPLICATIONS.
- STEEL BODY, STEEL INTERNALS.
- HYDRAULIC FLUIDS - GENERAL.
- NO INTERNAL PACKINGS.

\* MEASURED FROM SPOTFACE

### - SPECIFICATIONS -

HYDRAULIC SYMBOL	
PRESSURE RANGE	50 PSI TO 3500 PSI
TEMPERATURE RANGE	250°F TO -40°F
FLOW TOLERANCE	±10%
ALL DIMENSIONS IN INCHES	

### - ORDERING INFORMATION -

ASSEMBLY NUMBER 65XX-X-XX  
 SERIES NUMBER \_\_\_\_\_  
 PORT SIZE \_\_\_\_\_  
 UNDAMPENED - BLANK \_\_\_\_\_  
 DAMPENED (S.I.D.) - 1 \_\_\_\_\_  
 REGULATED FLOW RATE (GPM) \_\_\_\_\_

MODEL	THREAD	FLOW RANGE	L	HEX.
6506	9/16-18	0.25 - 2.5 GPM	0.875	0.187
6508	3/4-16	0.50 - 5.0 GPM	1.100	0.250
6510	7/8-14	0.50 - 15.0 GPM	1.100	0.250
6512	1 1/16-12	1.00 - 20.0 GPM	1.780	0.312
6516	1 5/16-12	1.00 - 25.0 GPM	1.875	0.375

MODEL	A	B	C	D	E
6506	1.50	1.22	0.502 / 0.515	0.10	0.391
6508	1.90	1.46	0.682 / 0.696	0.18	0.438
6510	2.12	1.58	0.798 / 0.814	0.25	0.500
6512	3.00	2.24	0.972 / 0.990	0.31	0.594
6516	3.25	2.42	1.222 / 1.240	0.38	0.594



Vonberg Valve, inc.

HYDRAULIC VALVE SPECIALISTS

3800 INDUSTRIAL AVE.  
 ROLLING MEADOWS, IL 60008-1085  
 PH: (847) 259-3800 FAX: (847) 259-3997