

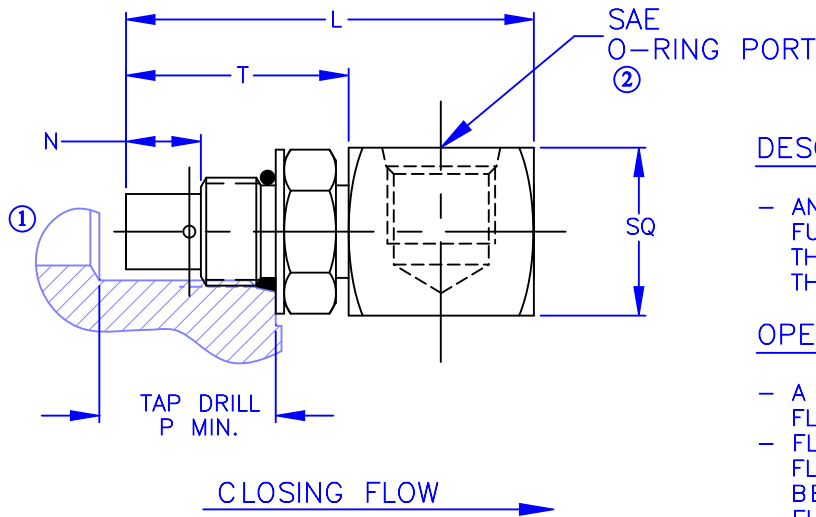


VELOCITY FUSE

IN-LINE SWIVEL

8700 SERIES

90° ELBOW



DESCRIPTION

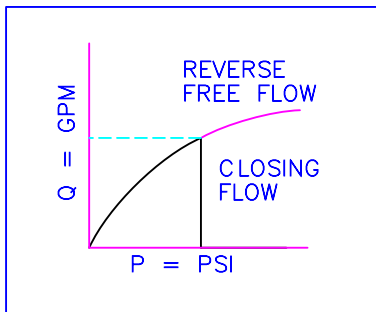
- AN IN-LINE 90° ELBOW SWIVEL VELOCITY FUSE WITH AN SAE O-RING OUTLET PORT THAT PROVIDES FULL-LINE SHUT-OFF IN THE EVENT OF A LINE FAILURE.

OPERATION

- A FLOW BELOW THE SPECIFIED CLOSING FLOW IS ALLOWED FROM "1" TO "2".
- FLOW ABOVE THE SPECIFIED CLOSING FLOW FROM "1" TO "2" IS ASSUMED TO BE A LINE FAILURE AND IS BLOCKED.
- FLOW FROM "2" TO "1" PASSES THRU THE CONTROLLING ORIFICE BUT IS UNCONTROLLED.
- CLOSING FLOW TOLERANCE = +15% - 0%

FEATURES

- SWIVEL DESIGN FOR EASY ALIGNMENT.
- 90° ELBOW FOR LOW PROFILE APPLICATIONS
- FAIL SAFE EMBEDDED FUSE DESIGN.
- STEEL BODY & COMPONENTS
- RAPID RESPONSE.
- POSITIVE CLOSE.
- SAE O-RING PORT OUTLET FOR LEAK FREE CONNECTIONS.



- SPECIFICATIONS -

HYDRAULIC SYMBOL	
OPERATING PRESSURE	3500 PSI
TEMPERATURE RANGE	250°F TO -40°F
REOPENING DIFFERENTIAL	50 PSI
ALL DIMENSIONS IN INCHES	

- ORDERING INFORMATION -

ASSEMBLY NUMBER	87XX-XX
SERIES NUMBER	
PORT SIZE	
CLOSING FLOW (GPM)	

MODEL	THREAD ②	CAVITY * THREAD	P	RATED FLOW	L	T	N	SQ
8704	7/16-20	7/16-20	0.950	0.2 - 4 GPM	1.770	1.110	0.400	0.750
8706	9/16-18	9/16-18	1.000	0.2 - 8 GPM	2.125	1.160	0.390	0.875
8708	3/4-16	3/4-16	1.250	0.5 - 15 GPM	2.555	1.430	0.550	1.000
8710	7/8-14	7/8-14	1.688	1.0 - 25 GPM	3.230	1.870	0.850	1.125
8712	1 1/16-12	1 1/16-12	1.980	2.0 - 40.0 GPM	3.625	2.065	0.905	1.375
8716	1 5/16-12	1 5/16-12	2.000	5.0 - 50.0 GPM	3.825	2.200	0.885	1.625

* FUSE NOSE REQUIRES A DEEPER TAP DRILL DEPTH - SEE DIM. P



Vonberg Valve, inc.
HYDRAULIC VALVE SPECIALISTS

3800 INDUSTRIAL AVE.
ROLLING MEADOWS, IL 60008-1085
PH: (847) 259-3800 FAX: (847) 259-3997